



关注微信

销售&服务

上海洲泰印刷机械有限公司  
中国上海市青浦区新胜路469号

上海洲泰轻工机械制造有限公司  
中国上海市青浦区嘉松中路2329弄61号  
电话: +86-21-69792723  
传真: +86-21-69792345  
销售: info@zhoutaimachine.com  
服务: service@zhoutaimachine.com  
www.zhoutaimachine.com

SALES&SERVICE

ZHOUTAI Pouch Machine  
ZHOUTAI Light Industrial Manufacturing Co., Ltd  
No 61, Lane 2329, Middle JiaSong Rd, QingPu District,  
Shanghai China

ZHOUTAI Laminating Equipment  
No 469, Xinsheng Rd, QingPu District, Shanghai China  
Service line: +86-21-69792723  
Contact: +86-21-69792345  
Sales: info@zhoutaimachine.com  
Service: service@zhoutaimachine.com

© ZHOUTAI Machinery, All Rights Reserved

# INNOVATION



# WITH PASSION

创新无处不在 CE UL

Version.02



## 企业简介 ENTERPRISE INTRODUCTION

洲泰机械主业是以“包装机械”为主体的大型制造型企业。主导产品为制袋机和复合机的两大板块的包装机械。站在轻工业的源头—上海，上海洲泰的设备优越性能，经济美观，人性化的设计打破了外资长期垄断的格局，实现了国内和国外市场的主导。

洲泰机械始创于1992年，秉承着“坚持创新，广纳人才”的企业宗旨，打造了国内外知名的洲泰品牌。自成立以来，洲泰不断地扩大其规模，在上海大虹桥枢纽地区已超过30000平方米生产面积，并相继成功建立了洲泰旗下的上海洲泰印刷机械有限公司、上海洲泰轻工机械制造有限公司以及上海宙太国际贸易有限公司。

洲泰机械致力于技术创新，投入年营业额的5%—7%到产品技术研发当中，被国家部委认定为“高新技术企业”并荣获多项专利，公司发明专利，实用新型专利，和外观专利已经超过了100多项。洲泰机械的制袋机产品的成品率比同行业高出5%到10%，效率高出10%到20%。

洲泰机械的产品已销往世界各地，通过了过欧洲合格认证（CE）和美国保险商试验所安全试验（UL）。洲泰机械已成功地走向国门，成为了国外业界知名的自主品牌。

洲泰机械有着一流的技术团队以及管理团队。洲泰技术团队,其中大部分为技术精湛的工程师。洲泰机械的员工对工作都报以极高的热忱,积极进取,努力革新。洲泰的管理团队有着丰富的管理经验和国际化知名公司的管理经验,倡导“以人为本”的人性化管理理念成功地将洲泰机械发展到现在的规模。

洲泰机械是一家注重品质与服务的企业,服务范围涉及全球,能及时为客户提供24小时的服务。公司的ERP流转仓库和当今发达的物流水平,极大的提升了洲泰售后的速度和效率,还有远程定时监控服务能使得工程师更便捷,更快速的帮助客户解决问题。

企业社会责任: 洲泰企业同样和很多优秀的企业一样致力于为社会创造价值,从帮助企业内部需要帮助的员工以外,还投入于一些公益的事业,参与镇领导,区领导的一些扶住关爱工作和国家灾区捐款的项目等。洲泰希望用自己最大的努力来为国家,尽企业的一份力量。

Zhou Tai Machinery is a global company in the Packaging machinery industry with a vast product range of pouch making machine, and laminating machine. Zhou Tai Machinery is established in 1992. Now it has grown into a global corporation with three subsidiary, Shanghai Zhou Tai Machinery, Shanghai Zhou Tai Light Industry Machine Manufacture Company Ltd., and Shanghai Zhou Tai International trading Company. Our facility covers over 30000 square meters in Shanghai Hong Qiao Transport Hub.

Zhou Tai Machinery dedicated in technology development. Each year, Zhou Tai Machinery re-invests 5-7% of its sales revenue in R&D. Zhou Tai machinery was recognized as “High-tech Enterprises” by national ministries. Our patented power transmission system technologies have reached globally-advanced levels. The rate of finished products of bag making machine is 5% to 10% higher than other companies. And the efficiency of Zhou Tai bag making machine is 10% to 20% higher than other companies.

Zhou Tai machines have been sold over 20 Countries in Asia, Europe, North and South America, and Africa. Zhou Tai machinery has successfully got into international market and been popular in many Countries. Our products are CE certified or UL certified. Zhou Tai Machinery has skillful technical team and experienced management team. In the Technical team, the most of the employees are experienced senior engineers and skillful technicians.

Zhou Tai machinery is a company that regards the quality and service. The service covers all over the world. With the rapidly spread of global express service, Zhou Tai Machinery offers the 24 hours service to the clients. The remote control service of Zhou Tai Machinery can also help engineers to solve the problems easier and sooner.

Social Responsibility: Zhou Tai as many of good responsible company is dedicated to build social responsibility. From helping company its own employees, town based, district based activity and national disaster support, Zhoutai is donating as much effort as they could to support the country as a part of company spirit.



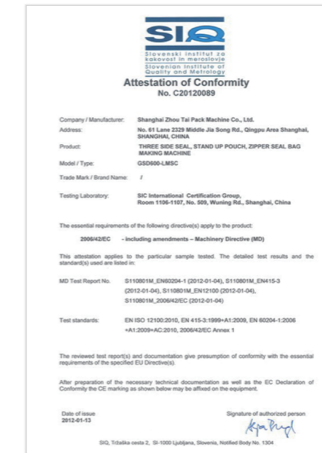
上海洲泰  
SHANGHAI ZHOUTAI







## 企业证书 Enterprise Certificate



## 企业优势 COMPANY ADVANTAGES

拥有各种先进的加工设备，可确保零件的后序稳定；内部实行前道工序为后道工序供应者体系，可确保每道工序的严格管理和检验；专业的采购队伍，长期稳定的优质供应商，可确保材料的品质及性能稳定；经验丰富的设计团队，可根据客户的需求，提供整厂的设计，生产线总包；超客户预期的优质售前、售中、售后服务；设备性价比稳居行业首位。

Owned kinds of innovating processing equipment, ensure parts to be stable in later procedure. Internal implementation of front-end-of line serve for back end-of line system, ensure strict management and examination for each step. Specialized purchase team, long-term stabilization of quality suppliers, ensure quality of raw material and reliable performance. Well experienced design group, being capable of designing for whole factory and production line turn-key project as per request of customers. Beyond customers is anticipation of presale, sale and after sale service. Equipments is cost performance ranks first in the industry.



质检体系 QA Inspection Center



仓库系统 Warehousing

## 技术服务与支持 Service & Support

洲泰销售与服务网络涉及多个国家，为顾客提供24小时技术支持以及配件订购服务，我们期望能够在最短的时间内给予您满意的答复。

ZHOUTAI Sale & Service Networks Covers In Many Countries For Giving Customers Technical Support And For Order Of Spares Parts. ZHOUTAI Expects Their Service Technicians To Solve The Customers' Problems And Answer The Questions In 24 Hours, Major Problems For No Later Than 2 Days.

## 售后热线邮箱 After-Sales Hotline

SERVICE@ZHOUTAIMACHINE.COM +86 21 69792345 +86 21 69792469

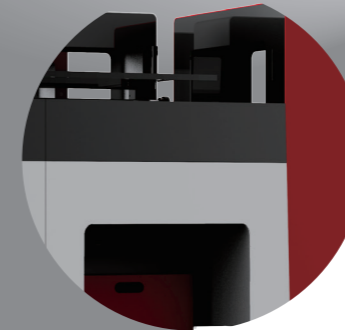


# AMD650FSL-G10



洲泰机械 05-06  
ZHOUTAI MACHINERY

平底袋系列 Flat Bottom Series



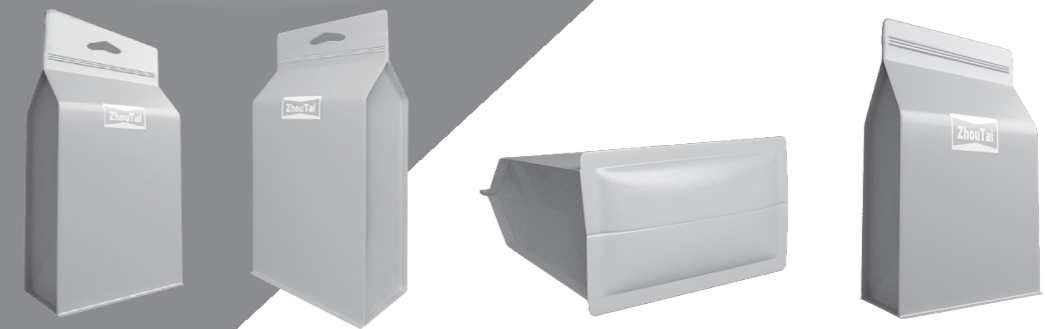
## 多功能平底袋设备-G10

MULTIFUNCTIONAL FLAT BOTTOM POUCH MAKING MACHINE-G10

型号	AMD650FSL-G10
可制袋型	方底袋, 方底袋加拉链, 方底袋加滑扣拉链, 四边封, 四边封加拉链
速度	最大机械速度100段/分钟

Machine Type	AMD650FSL-G10
Performance	Flat Bottom pouch, Flat Bottom Pouch with zipper or Optional Slider Four Side Seal, Four Side Seal with Zipper
Machine Speed	Max Mechanical Speed 100cuts/min





## 多功能型重压型平底袋

LARGE SCALE FLAT BOTTOM POUCH MAKING MACHINE WITH MULTIPLE PURPOSE

型号	AMD1000FSL
可制袋型	方底袋, 方底袋加拉链, 方底袋加滑扣拉链四边封, 四边封加拉链
主薄膜范围	上1040X $\varnothing$ 800MM 下1240X $\varnothing$ 800MM
贴底膜范围	200X $\varnothing$ 800MM
侧风琴范围	400X $\varnothing$ 800MM
最大方底袋+拉链 (高x宽x侧风琴)	1000X400X100MM
最小方底袋+拉链 (高x宽x侧风琴)	500X100X25MM
速度	最大机械速度 80段/分钟

Machine Type	AMD1000FSL
Performance	Flat Bottom pouch, Flat Bottom Pouch with zipper or Optional Slider Four Side Seal, Four Side Seal with Zipper
Size of Material Film	Upper 1040x $\varnothing$ 800mm Down 1240x $\varnothing$ 800mm
Size of Bottom Gusset Film	200x $\varnothing$ 800mm
Size of Side Gusset Film	400x $\varnothing$ 800mm
Maximum Size of Flat Bottom pouch with Zipper(HxWxWidth of Side Gusset Film)	1000x400x100mm
Minimum Size of Flat Bottom pouch with Zipper(HxWxWidth of Side Gusset Film)	500x100x25mm
Machine Speed	Max Mechanical Speed 80cuts/min



# AMD600HLMSC



洲泰机械 09-10  
ZHOUTAI MACHINERY

自立拉链袋系列 SUP Zipper



## 高速自立（拉链）制袋机

High Speed Three Side Seal, Inserted Bottom Gusset Stand-up Pouch, Floded Bottom Gusset, with Optional Zipper Pouch Making Machine

型号	AMD600HLMSC
可制袋型	三边封, 自立袋 (可带拉链), 连体自立袋 (可带拉链)
主薄膜范围	1200x $\phi$ 800MM
贴底膜范围	110x $\phi$ 600MM
速度	三边封: 250Cuts/min, 自立袋: 200Cuts/min, 自立袋拉链: 200cuts/min
制袋宽度	78-600mm
制袋长度	50-250 (6倍送)

Machine Type	AMD600HLMSC
Performance	Three side Pouch, Inserted Bottom Gusset Stand-up Pouch with or without Zipper Floded Bottom Gusset Stand-up Pouch with or without Zipper,
Size of Material Film	1200x $\phi$ 800mm
Size of Bottom Film	110x $\phi$ 600mm
Speed	Three side Pouch:250Cuts/min, Stand-up Pouch: 200Cuts/min Stand-up Pouch with zipper: 200cuts/min
Width of Bag	78-600mm
Length of Bag	50-250 (6 Skip function)



# AMD600LMSC / AMD650LMSC



洲泰机械 11-12  
ZHOUTAI MACHINERY

自立拉链袋系列 SUP Zipper



## 多功能型自立拉链

MULTIFUNCTIONAL POUCH MAKING MACHINE FOR STAND-UP WITH ZIPPER POUCH

型号	AMD600LMSC	AMD650LMSC
可制袋型	三边封, 自立袋, 连体自立袋 连体自立拉链袋, 纸塑复合袋 (共用)	
主薄膜范围	1200X $\varnothing$ 800MM	1300X $\varnothing$ 800MM
贴底膜范围	110X $\varnothing$ 600MM	110X $\varnothing$ 600MM
制袋速度	三边封: 180Cuts/min 自立袋: 120Cuts/min 自立袋/拉链: 100Cuts/min (共用)	
制袋宽度	80~550MM	80~650MM
制袋长度	60~300(6倍送)	60~300(6倍送)

Machine Type	AMD600LMSC	AMD650LMSC
Performance	Three Side Seal, Inserted Bottom Gusset Stand-up, Single-Web Bottom Gusset Stand-up & Zipper Seal	
Size of Material Film	WidthXDia:1200X $\varnothing$ 800mm	WidthXDia:1300X $\varnothing$ 800mm
Size of Bottom Gusset Film	WidthXDia:110X $\varnothing$ 600mm	WidthXDia:110X $\varnothing$ 600mm
Size of Side Gusset Film	Three Side Seal : 180cuts/min Stand-up:120cuts/min Stand-up with zipper : 100cuts/min	
Width of Bag	80~550mm	80~650mm
Length of Bag	60~300(Infeed 6 times)	60~300(Infeed 6 times)

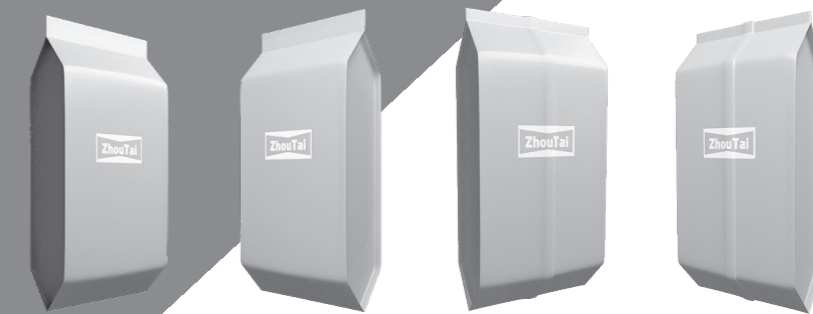
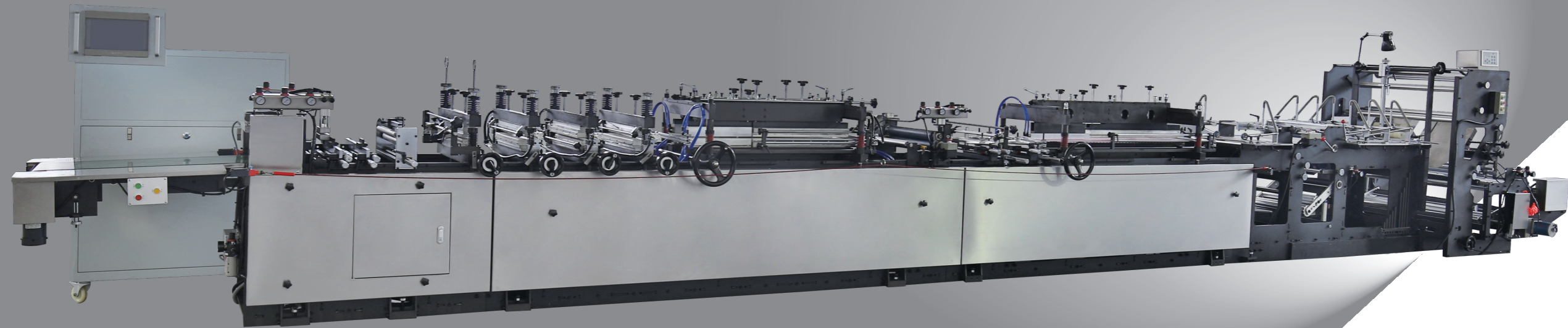


# AMD450-Z / AMD600-Z



洲泰机械 13-14  
ZHOUTAI MACHINERY

中封四边封系列 Center Seal & 4-Seal



## 中封四边封设备

HIGH SPEED POUCH MAKING MACHINE FOR CENTER SEAL , FOUR SIDE SEAL POUCH

型号	AMD450-Z	AMD600-Z
可制袋型	中封, 侧边封, 四边封	中封, 侧边封, 四边封
主薄膜范围	920X $\varnothing$ 800MM	1220X $\varnothing$ 800MM
折叠深度	每边Max.70MM	每边Max.70MM
制袋速度	中封&四边封: 200段/分	中封&四边封: 200段/分
制袋宽度	80~450MM	100~600MM
制袋长度	60~300(6倍送)	60~300(6倍送)

Machine Type	AMD450-Z	AMD600-Z
Performance	Center Seal, Side Seal & Four Side Seal	Center Seal, Side Seal & Four Side Seal
Size of Material Film	WidthXDia:920X $\varnothing$ 800mm	WidthXDia:1220X $\varnothing$ 800mm
Gusset Depth	Each Side :Max.70mm	Each Side :Max.70mm
Machine Speed	Center Seal&Four Side Seal : 200cuts/min	Center Seal&Four Side Seal : 200cuts/min
Width of Bag	80~450mm	100~600mm
Length of Bag	60~300(Infeed 6 times)	60~300(Infeed 6 times)



# AMD600SC-C / AMD650MQJ



洲泰机械 15-16  
ZHOUTAI MACHINERY

企鹅/自立系列 Cheerpack / SUP



## 企鹅包和线外模切机

HIGH SPEED POUCH MAKING MACHINE FOR STAND-UP POUCH, CHEERPACK POUCH WITH REGISTERD GUSSET

型号	AMD600SC-C	AMD650-MQJ 新型线外模切机
可制袋型	三边封, 自立袋, 异型袋, 企鹅袋	异型袋
主薄膜范围	1200X $\phi$ 800MM	模切宽X长: 600X300MM
制袋速度	三边封: 200段/分 自立袋: 200段/分 异型袋(线外模切): 160段/分	模切速度: 150段/分
制袋宽度	80~550MM	
制袋长度	50~300(6倍送)	

Machine Type	AMD600SC-C	AMD650-MQJ Die Cutting Machinen
Performance	Three Side Seal, Inserted Bottom Gusset Stand-up, Unique Shaped(Die Cutting), Cheerpack	Unique Shaped(Die Cutting)
Size of Material Film	WidthXDia:1200X $\phi$ 800mm	Die Cutting Size: WXL. 600X300mm
Machine Speed	Three Side Seal : 200cuts/min Stand-up:160cuts/min	Machine Speed: Max.150cuts/min
Width of Bag	80~550mm	
Length of Bag	50~300(Infeed 6 times)	

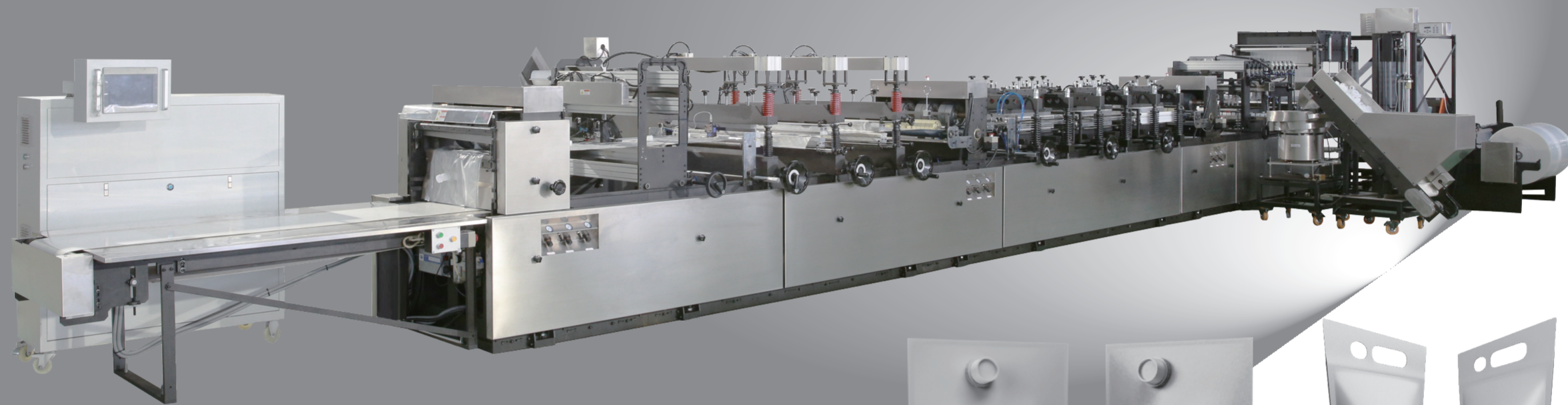


# | AMD600-BIB / AMD1200-BIB



洲泰机械 17-18  
ZHOUTAI MACHINERY

盒中袋系列 BIB Series



## 盒中袋设备

AUTOMATIC POUCH MAKING MACHINE FOR BIB (BAG IN BOX)



型号	AMD600-BIB	AMD1200-BIB
可制袋型	盒中袋, 自立袋加嘴	盒中袋, 自立袋加嘴
主薄膜范围	1220X $\varnothing$ 800MM (选配双放料)	1220X $\varnothing$ 600MM (选配四放料)
贴底膜范围	120X $\varnothing$ 450MM	
制袋速度	盒中袋, 自立袋加嘴: 15-45个/分	盒中袋, 自立袋加嘴: 15-30个/分
Machine Type	AMD600-BIB	AMD1200-BIB
Performance	BIB Bag in Box, Inserted Bottom Gusset Stand up Pouch, Spout Welded	
Size of Material Film	WidthXDia:1220X800mm (optional 2 unwind)WidthXDia:1220X600mm (optional 4 unwind)	
Size of Bottom Gusset Film	WidthXDia:120X450mm	
Machine Speed	BIB & Stand up Pouch with Welded Tap:15-45cuts/min BIB & Stand up Pouch with Welded Tap:15-30cuts/min	





洲泰机械  
ZHOUTAI MACHINERY

咨询热线: +86-21-69792345  
INFO@ZHOUTAIMACHINE.COM  
www.zhoutaimachine.com



型号	AMD600-ZML
可制袋型	中封, 四边封, 连体自立拉链袋
主薄膜范围	1220X $\varnothing$ 800MM
折叠深度	20mm-70mm
制袋速度	中封&四边封: 200个/分 连体自立袋: 35-150个/分 连体自立拉链袋: 35-120个/分
制袋宽度	中封袋150~600MM 连体自立拉链袋(高X深): 200-350X20-60mm 备注: 袋长超过300mm, 采用倍送, 最大倍送数6倍
Machine Type	AMD600-ZML
Performance	Center Seal, Four Side Seal, Single-web Stand up with option Zipper
Size of Material Flim	WidthXDia:1220X $\varnothing$ 800mm
Gusset Depth	Gusset Depth:20mm-70mm
Machine Speed	Center Seal&Four Side Seal : 200cuts/min Singel-web Stand up: 35-150cuts/min Singel-web Stand up with Zipper: 35-120cuts/min
Width of Bag	Center Seal(width):150~600mm Singel-web Stand up (HeightXGusset Depth):200-350X20-60mm



# AMD600-ZML



洲泰机械  
ZHOUTAI MACHINERY



制袋机 Pouch Making Machine



多功能中封假自立双出高速制袋机

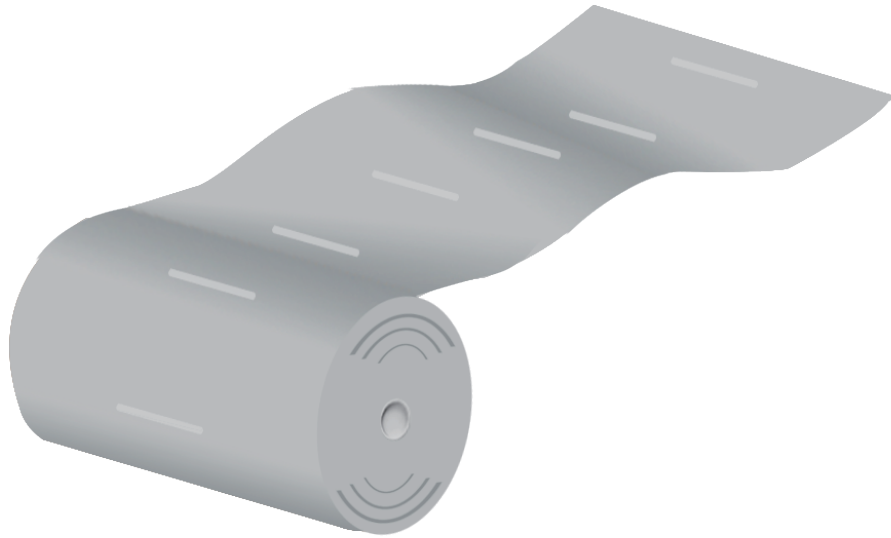
MULTIFUNCTION POUCH MAKING MACHINE FOR CENTER SEAL ,FOUR SIDE SEAL POUCH AND SINGLE-WEB STAND UP POUCH (TWO LINES)





洲泰机械  
ZHOUTAI MACHINERY

咨询热线: +86-21-69792345  
INFO@ZHOUTAIMACHINE.COM  
www.zhoutaimachine.com



型号	AMD450-TDL 横向拉链装置
主薄膜范围	1420X $\varnothing$ 800MM
制袋速度	20米/分钟
输送宽度	100~450MM
制袋长度	50~300(6倍送)
Machine Type	AMD450-TDL TD Zipper Applicator
Size of Material Flim	WidthXDia:1420X $\varnothing$ 800mm
Machine Speed	20Meters/min
Width of Bag	100-450mm
Length of Bag	50~300(Infeed 6 times)



# AMD450-TDL 横向拉链装置



洲泰机械  
ZHOUTAI MACHINERY



制袋机 Pouch Making Machine



横向拉链专用设备

TRANSVERSAL ZIPPER APPLICATOR